

MasterPiece: Commercial/Contracts Planning & Estimating

MasterPiece Commercial is a system designed for commercial/contracts floor covering operations. It supports the project from start to finish. For an operation which does both commercial and retail both types of job can be handled with a single installation.

Dramatic reduction in take-off time. Where architect's drawings are available in PDF/CAD, these can be imported and measurements taken off by trace-around. A stairway builder is provided for rapid quantification of steps. If measurements have been taken on site using paper, these are rapidly entered using the freehand drawing facility.

Flexibility & automation in planning.

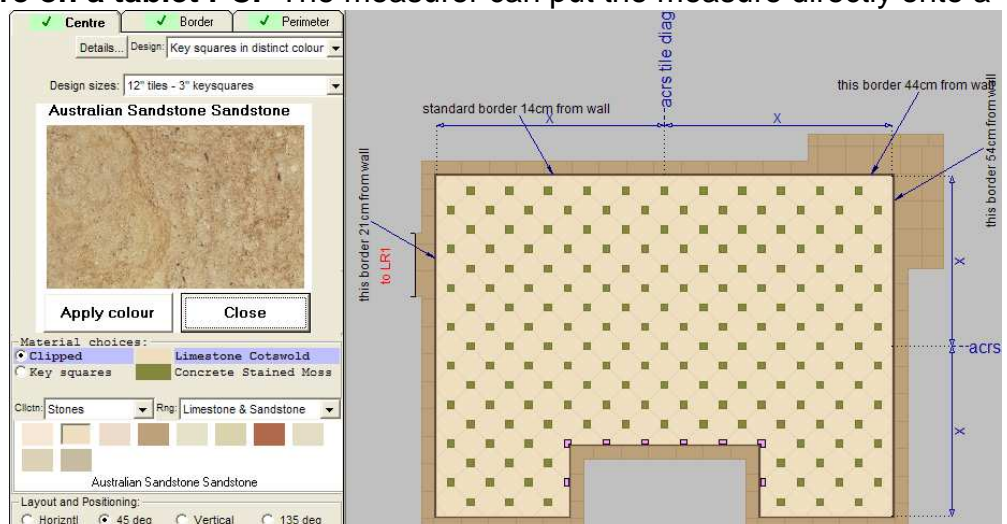
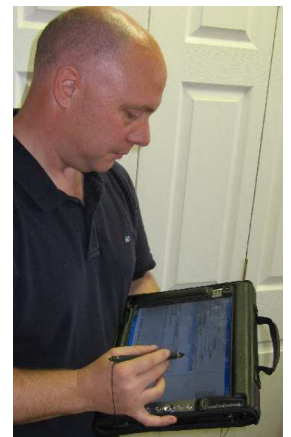
MasterPiece provides both manual planning and an autoplanner. The autoplanner plans efficiently to standard 'whole roll' lengths and/or to the lengths which the supplier has available. Often a number of permutations of how rooms are allocated to materials will need to be planned before the final go ahead. MasterPiece can not only hold multiple areas (eg a carpet area, laminate and tile areas) within the job, but can also hold all permutations (eg both all rooms in carpet and all rooms in tile). Groups of rooms can be designated to a particular 'building level' or to a particular 'plot'.

Flexibility in costing. MasterPiece holds both cost and selling prices. Commercial jobs can be costed based on cost price plus margin. Required margin can be applied separately to materials and labour, or even to individual items. Either Roll or Cut prices can be used, with the value of any unused roll assessed. The costing can readily be switched to being based on selling price, with ability to apply discount to all or part of the job. Labour can be costed either based on square or linear meterage or else based on assessed man hours. MasterPiece is also unique in the automation of costings: the organisation's costing rules (min charges, HSL charges, open stairs, additional labour charges) can be configured in. A 'rates based' costing module is also available.

On site or check measure on a tablet PC. The measurer can put the measure directly onto a tablet whilst moving from room to room.

MasterPiece has been designed to collect all the information that the office may need to know and also provide clear information for the installer. The job is readily transferred from tablet to desktop installation.

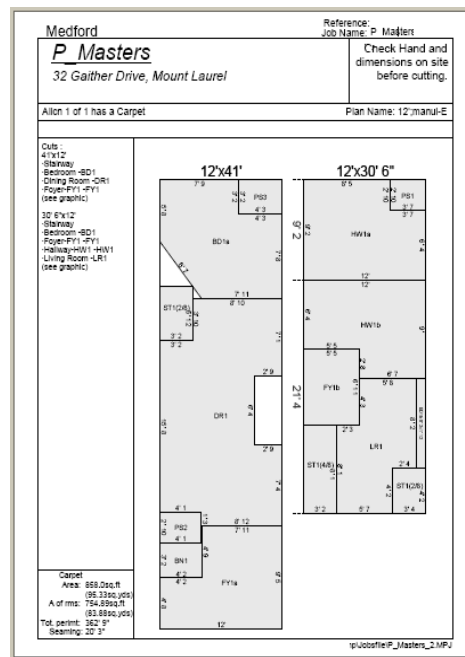
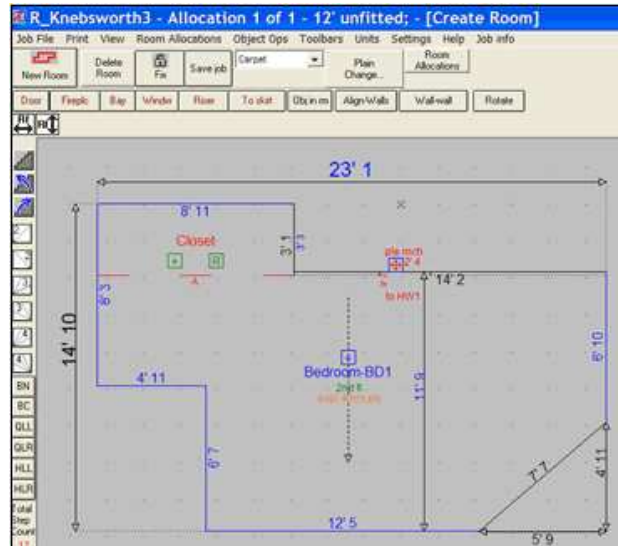
MasterPiece Systems



Information for installer readily printed. The system automatically compiles the installation instructions: these inform the installer not only what quantities are required, but what tasks are to be done, on a room by room basis. A job can be split into a number of installation events, each with its own installation instructions and plans. The information for installer, both instructions and plans can be printed as a pack, by single button click. Estimates can be emailed to the customer or printed. MasterPiece thus becomes the electronic filing cabinet for jobs in progress; replacing the physical cabinets. MasterPiece's archive is a long term list of previous customers & jobs, with rapid access.

MasterPiece as training system. MasterPiece has deep expertise built into the software. Its unique guidance system thinks ahead of the user and brights up the button which the user probably needs to select next. Explanatory prompts are provided when useful and the system checks for mistakes at every stage of the process. MasterPiece is therefore both a training system for novice estimators and rapid familiarisation system for experienced estimators. Hard to learn tasks, such as patterned carpet planning, are easily understood from the intuitive on screen presentation.

Data administration and performance



assessment. MasterPiece provides powerful product data administration facilities. Complex products sets such as those from the main tile suppliers are available off the shelf for inclusion in the retailer's product mix. Product data can be imported from existing data servers. New product lines can be rapidly entered using similar products as a starting point. Price and margin changes can be handled en bloc, much faster than making changes to individual product lines. MasterPiece provides the data distribution so that all MasterPiece units work to a common and up to date product and price list.

MasterPiece supports the ordering process for materials, either by printing the order forms or by transferring data electronically to an existing ordering system.



MasterPiece's benefits include the following:

- More throughput with less effort: v rapid measurement take off; autoplaner; instant costing; job sheets created automatically; enter customer information just once; rapid access to current and archived jobs.
- Be more competitive: On average use 3% less carpet, 8% less underlay & gripper.
- Reduce occurrence of mistakes: 70% of paper estimation errors are avoided.
- Save training time and effort: Inexperienced recruit becomes reliable within 3 weeks.